

RESOLUTION

C O P P E R

Resolution Copper is committed to creating sustainable benefits for local communities. This scorecard is intended to offer a snapshot of our efforts, including where we need to improve.

2022

SCORECARD

1ST QUARTER

SAFETY

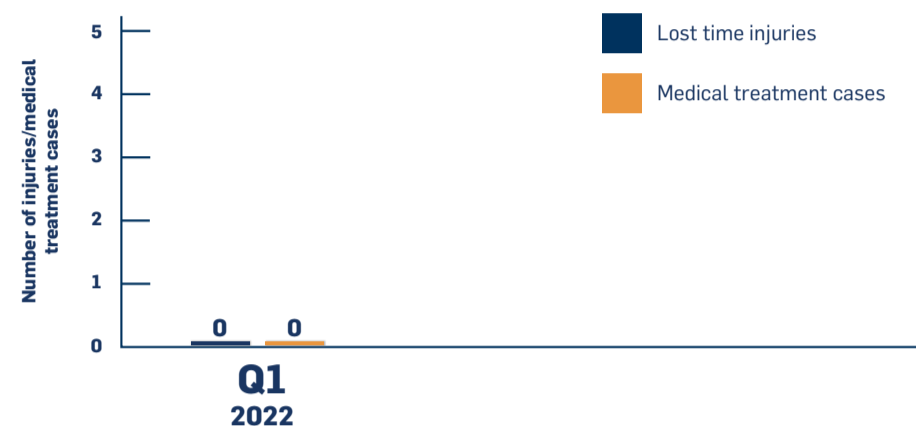


KEEPING OUR WORKFORCE SAFE

At Resolution Copper safety comes first.

One way Resolution measures safety is by the All Injury Frequency Rate (AIFR), which tracks all reportable injuries; lost time injuries, restricted work injuries and medical treatment cases, per 200,000 hours worked..

Resolution Copper closed Q1 2022 with an AIFR of 0.00.

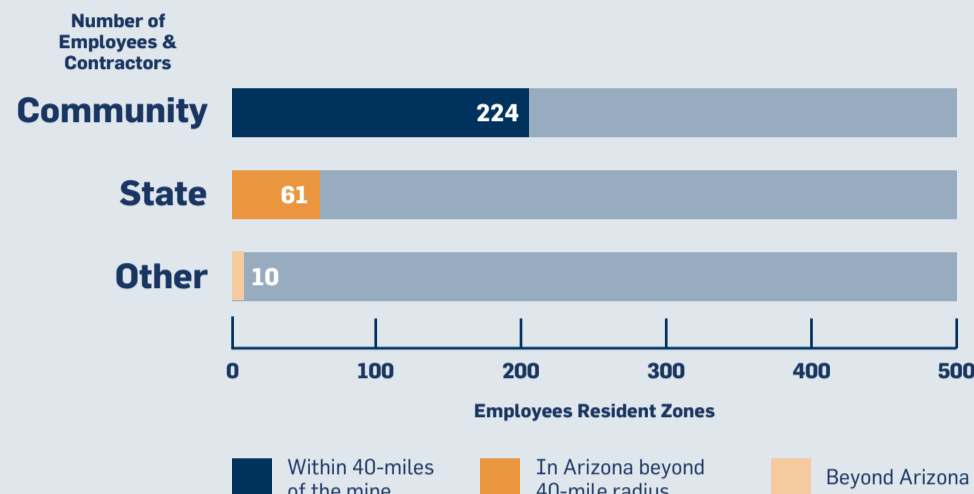


PEOPLE



CREATING JOBS

Resolution Copper is committed to a workforce that reflects the local communities and cultures in which we operate and are committed to hiring qualified candidates locally when we can.



PROTECTING THE ENVIRONMENT AND OUR COMMUNITY

Resolution Copper has spent millions of dollars securing surface water and storing it as groundwater to provide water for our future operations. We began dewatering operations for copper mine development in March 2009 and have since stored enough surface water to sustain our operations for decades. Since that time, the water we remove goes through a treatment process on-site and is then sent to farmers in the New Magma Irrigation and Drainage District (NMIDD) to grow crops, allowing ground water levels to rise in the area.

In Q1, we conducted soil sampling to monitor the impact of our dewatering activities. The goal of soil sampling is to ensure that irrigation of blended water does not adversely influence soil quality relative to pre-existing conditions. Our Environmental and Geology teams sampled over 70 fields in the NMIDD. To date, there have been no adverse effects to the soils or crops.

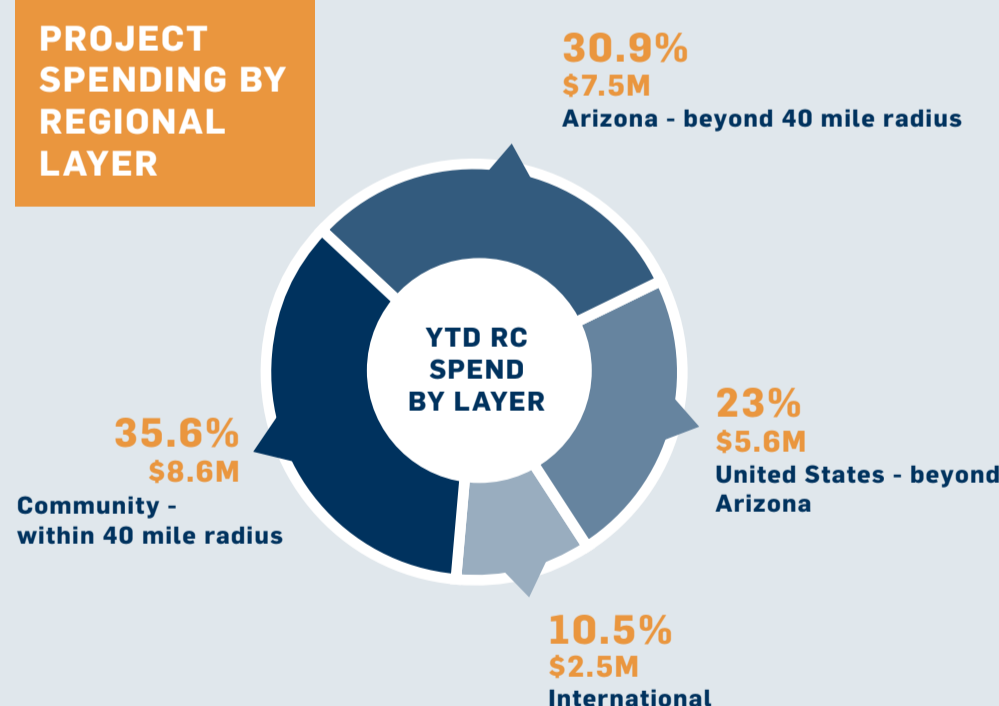


CASH



BUILDING THE LOCAL ECONOMY

Resolution Copper is a transformative project that is low cost and has a long life. It is scalable and strategically placed to meet the increasing demand for US copper across the nation. Wherever possible, we work with local suppliers and vendors to ensure that the benefits of the project are delivered directly to the community.



PARTNERSHIP



INVESTING IN THE COMMUNITY

KEY INVESTMENTS IN Q1

- Entrepreneur & Innovation Center for Town of Superior (2022 multi-year partnership agreement)
- Globe High School Robotics team (multi-year partnership agreement)
- Superior Little League
- Central Arizona College Foundation
- NABI Foundation



\$376,270

0

COMPLAINTS RECEIVED

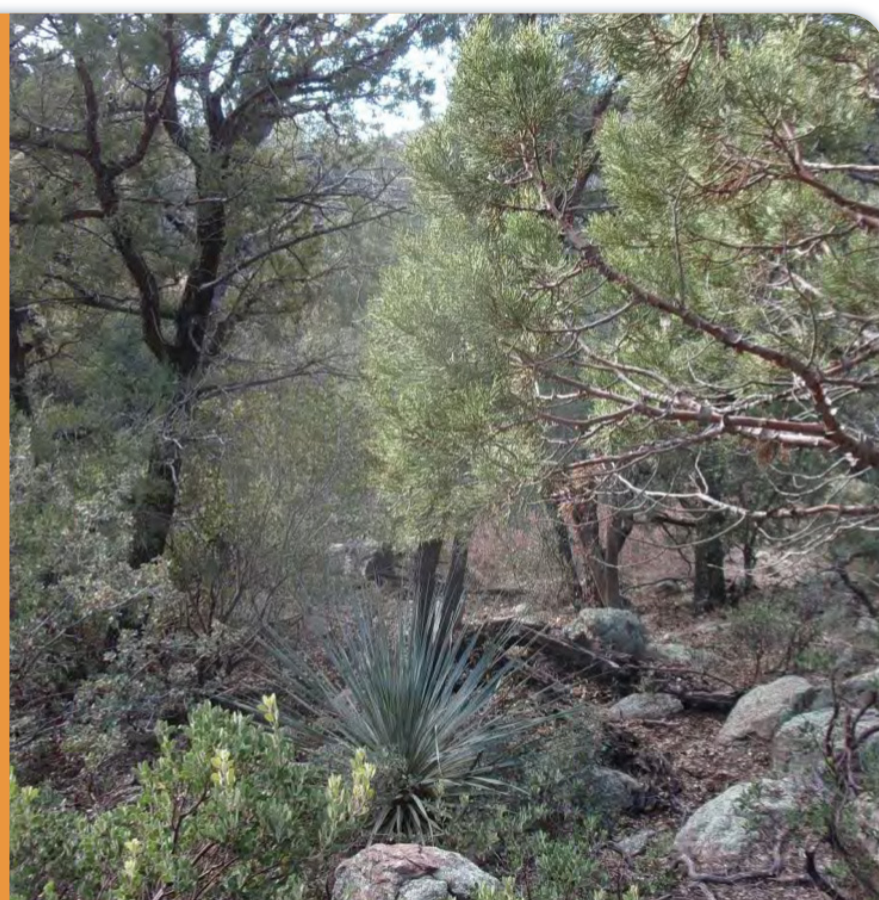
In Q1, we received 0 complaints about our project. If you have feedback for our teams, please contact our Community Complaint Line: +1 520 689 3955 | community-complaint@resolutioncopper.com

GROWTH



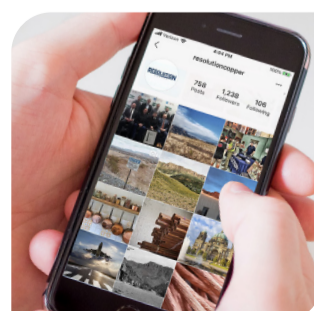
PERMITTING AND CULTURAL HERITAGE

In Q1 Resolution Copper worked with Tribal Cultural Consultants from WestLand Engineering & Environmental Surveys to complete the JI Ranch Cultural Resources Survey Report. This work included conducting a tribal perspectives survey and culturally significant natural resources inventory of approximately 270 acres of private lands at JI Ranch. Resolution Copper (Resolution) owns the JI Ranch property along the east edge of Top-of-the-World. It is an oak-studded basin east of Superior on the highest point of the rugged Pinal Highlands. New places of tribal value were documented through pedestrian survey, and important plants such as Emory oak trees/seedlings, beargrass, agave, etc., were inventoried. JI Ranch has many plants that have cultural use and value. These plants are utilized at certain times of the year among the tribes and play an important role in the life and longevity of the people. JI Ranch is one of Resolution Copper's long-term conservation properties, and we look forward to continuing our work with the tribes to ensure our conservation sites are properly managed.



SHARING INFORMATION

Resolution Copper keeps our community informed using social media, mailers and on our website.



YOUR
FEEDBACK IS
IMPORTANT
TO US.

EMAIL INFO@RESOLUTIONCOPPER.COM OR CALL 520.689.3409 WITH COMMENTS, QUESTIONS OR CONCERNS.