

LAND EXCHANGE

As part of a congressionally mandated land exchange with the federal government, Resolution Copper provided more than 5,500 acres of environmentally sensitive and culturally important land across Arizona to the U.S. Forest Service and the Bureau of Land Management in exchange for over 2,400 acres of land near Superior, Arizona. The land exchange was completed in March 2026.

WHAT IS A LAND EXCHANGE?

A land exchange is a commonly used tool for managing federal lands. It involves transferring public land administered by a federal agency to another owner in exchange for other lands, through an open and transparent process. Land exchanges may be administrated or legislated through approval by Congress. They are used to support public objectives, including conservation, recreation, and economic development.

WHAT LANDS WERE EXCHANGED?

Through the Southeast Arizona Land Exchange and Conservation Act, the federal government and the public received nearly 5,500 acres of high-value conservation land, including riparian habitat, wildlife corridors, and culturally significant landscapes. These lands will be permanently protected and managed for public benefit.

In return, Resolution Copper received approximately 2,400 acres of land adjacent to the historic Magma Copper mine near Superior. This land position supports future exploration and development of the Resolution Copper deposit.

WHEN WAS THE LAND EXCHANGE COMPLETED?

The land exchange was completed March 2026, marking a key milestone that advances the project and supports long-term planning for the region.

PERSPECTIVE FROM THE COMMUNITY

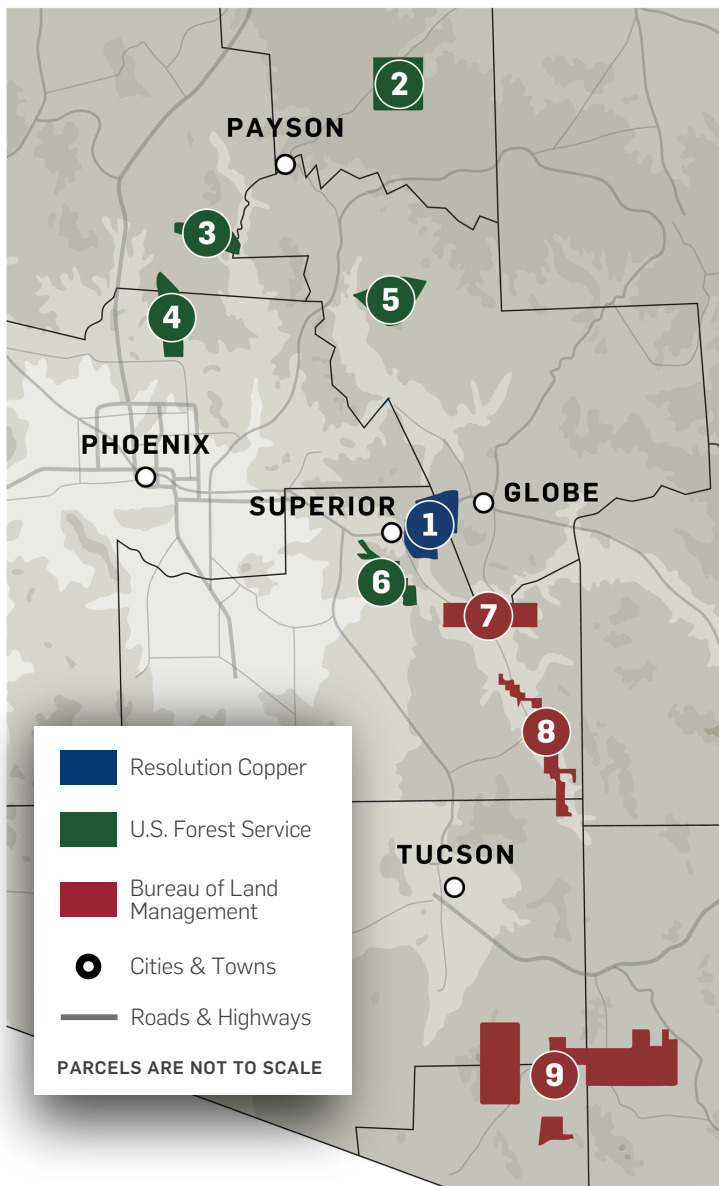
"We are thrilled about this outcome, Resolution Copper has been an excellent community partner over the past decade. Through the land exchange, Arizonans will receive thousands of acres that will become part of two National Conservation Areas, providing long-term conservation, habitat and cultural heritage protection, and recreational opportunities."



SPECIAL PROTECTION FOR APACHE LEAP

Resolution Copper is already implementing the mutually agreed upon measures required in the land exchange bill with Native American tribes. We've designed our mine plan to protect Apache Leap and integrate tribal recommendations on public access, grazing and other protections for culturally important locations.

Over 800 acres of land has been set aside to permanently protect this unique culturally important area as a Special Management Area (SMA), overseen by the U.S. Forest Service.



Resolution Copper

1 Oak Flat (Pinal County)

Over 2,400 acres of federal land located within the Tonto National Forest. This mineral-rich, semi-arid tree and shrubland area has been identified as a significant domestic source of copper.

U.S. Forest Service

This land will become part of the national forest in which the land is located.

2 East Clear Creek (Coconino County)

640 acres of forest and canyon habitat along a perennial stream within the Coconino National Forest. Supports habitat for the federally threatened Mexican spotted owl and Little Colorado spinedace. Offers high biodiversity, recreation, and conservation value.

3 Tangle Creek (Yavapai County)

148 acres of rugged terrain known for hiking, camping, and hunting. Located in a key wildlife corridor, it supports desert woodland species. Enhances public access to a remote, scenic area with strong conservation and recreation potential.

4 Cave Creek (Maricopa County)

149 acres of Sonoran Desert with rich biodiversity and cultural heritage. Features petroglyphs and ruins from Indigenous cultures, plus habitat for species including the federally threatened yellow-billed cuckoo. A unique site for conservation, education, and heritage tourism.

5 Turkey Creek (Gila County)

147 acres of riparian and woodland habitat supporting a diverse array of wildlife, including the federally threatened Mexican spotted owl. Part of a broader strategy to protect and restore Arizona's stream ecosystems.

6 Apache Leap South End (Pinal County)

140 acres at the base of Apache Leap, a site of cultural importance to tribes and the Town of Superior. Includes scenic cliffs, archaeological sites, and habitat for species like the Gila monster. Will be added to the Apache Leap Special Management Area that is administered by the Tonto National Forest.

Bureau of Land Management

7 Dripping Springs (Gila & Pinal County)

160 acres identified by national rock climbers as a significant rock-climbing resource. Supports Sonoran Desert wildlife and expands public access to a unique recreation area. Enhances conservation of Arizona's desert ecosystems.

8 Lower San Pedro River (Pinal County)

3,063 acres along the San Pedro River, featuring mesquite bosque and soapberry groves. Critical habitat for threatened and endangered bird species and home to over 500 additional wildlife species. A vital wildlife corridor and research site within a nationally recognized conservation area.

9 Appleton Whittell Ranch (Santa Cruz County)

957 acres of grassland, oak savanna, and wetlands added to Las Cienegas National Conservation Area. Supports habitat for hundreds of plant and animal species, including the federally endangered jaguar and the federally threatened yellow-billed cuckoo. A key site for biodiversity and scientific research.



LEARN MORE AT RESOLUTIONCOPPER.COM

